

# Steora



# Steora

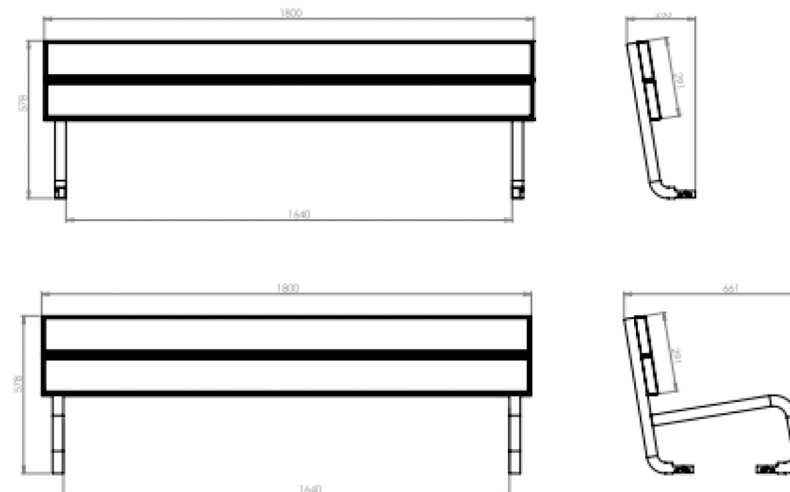


Each Steora bench can be upgraded by a variety of additional options, making every model fully modular and even more advanced.

There are mechanical add-ons, such as smart backrest and armrest, as well as electrical add-ons, such as smart USB chargers, air quality sensors, hybrid module and other.

Every additional option is designed, developed and intensively tested inside Include, ensuring highest reliability and quality even in severe conditions after several years of usage.

Most of the additional options can be integrated into the bench even after the installation process. Any future developed additional options are also going to be compatible with previously installed Steora benches.



## Armrest

**Weight**  
5 kg

## USB fast chargers

**Rated power**  
18 W per port (36 W combined)  
**Independent USB-A & USB-C connectors**  
Yes  
**Standards**  
DCP, QC2.0, QC3.0, PE+1.1, PE2.0, FCP, AFC, SFCP, SCP, USB PD

## Backrest

**Combined rated power**  
67 W  
**MPPT tracking speed**  
<100 ms  
**Combined efficiency**  
50.00 %  
**MPPT for each beam**  
Yes  
**Rated power**  
7 W  
**Air flow**  
58m³/h (35CFM)  
**Temperature trigger**  
20°C to 45°C  
**Noise level**  
30 dBA  
**Weight**  
34 kg

# Steora additional options



## Hybrid module (Cyclo)

**AC input**  
100-240V – 50/60Hz 2.7-1.1A

**Rated power**  
192 W

**Operating ambient temperature**  
-40°C to 50°C

## Hybrid module (Classic/City)

**AC input**  
100-240V – 50/60Hz 2.7-1.1A

**Rated power**  
54 W

**Operating ambient temperature**  
-40°C to 50°C

## Wi-Fi module

**Max power consumption**  
9 W

**LTE category**  
4 (150Mbps Downlink, 50Mbps Uplink)

**Wireless 2.4 GHz Max data rate**  
300 Mbit/s

**10/100 Ethernet ports**  
1

## LCD display

**Max power consumption**  
40 W

**Brightness**  
1000 lux

**Operating ambient temperature**  
-20°C to 50°C

**PPI**  
86

**Resolution**  
1024 x 1280

## Noise sensor

**Background noise sensor**  
30 dB – 120 dB

## Seating surface heating system

**Operating voltage**  
230 V

**Max power consumption**  
450 W

**Time controlled**  
Yes

**Temperature controlled**  
Yes

**Fused**  
10 A

**Temperature protection**  
Bimetal switch per each beam

## AI/ML camera

**Resolution**  
2 MP

**Operating ambient temperature**  
-20°C to 50°C

**Max power consumption**  
1.5 W

## AIR quality sensor

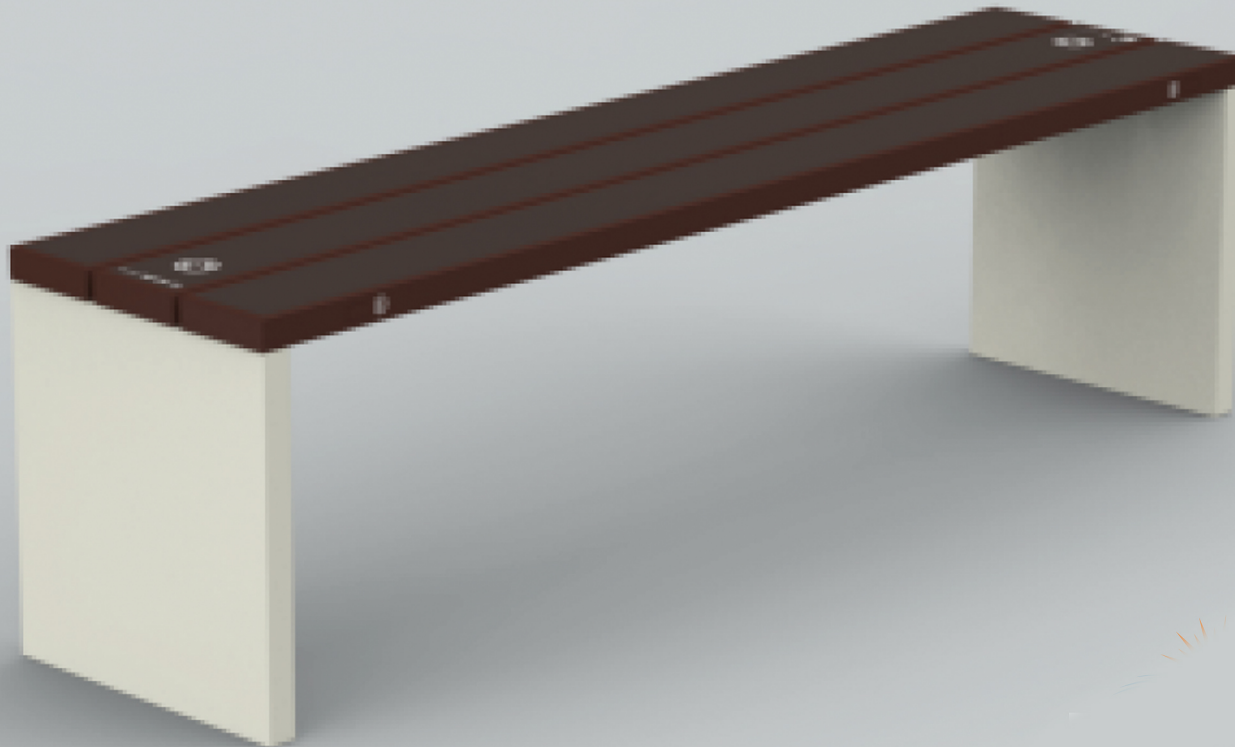
**Working temperature**  
-30°C to +50°C

**PM sensor**  
PM1.0, PM2.5, PM10 (µgm3)

**NO, NO2, O3**  
0-20ppm, <±0.5 (>15% RH, <85% RH)

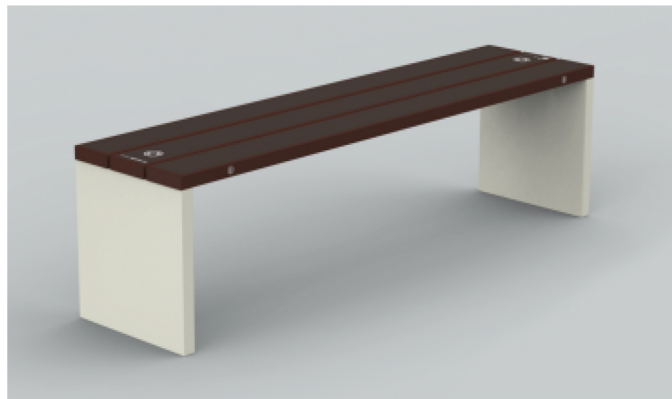


# Steora City





# Steora City



Steora City smart bench is the world most powerful bench ever created.

City shares same technology and core features as the Classic model, but with wider set of additional options.

When equipped with optional LCD display and advanced AI camera for precise DOOH advertising, City becomes a perfect option for high frequent locations, thus creating revenue and ROI - already proven in several cities around the world.

Our new City model also provides fast wireless charging and network of reliable sensors which gather information in bench surrounding - all packed in self-sustainable and environmentally friendly product with refurbishing option.

## **Dimensions**

1800 x 505 x 440 mm

## **Weight**

65 kg

## **IK rating**

IK08

## **Materials**

alu-zinc, aluminium, hot-dip zinc coated steel [EN10346], galvanized low carbon steel [ISO 2081]

## **Operating temperature**

-20°C to 50°C

## **Operating Humidity**

[RH] 0-100%

## **Environment**

C4/C5\* (\*on request)

## **IP rating**

IP54/IP2X

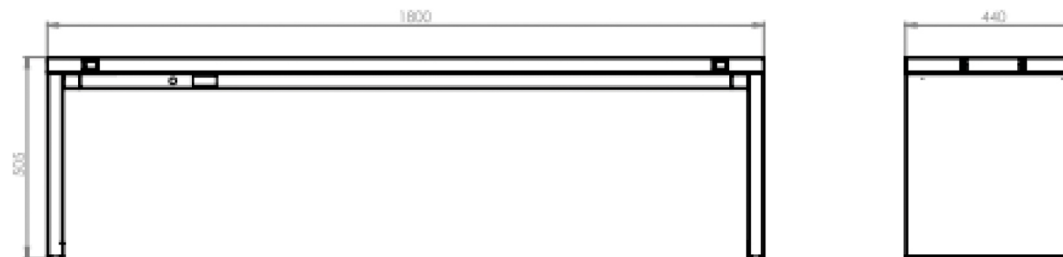
## **Noise level**

30 dBA

## **Maximum load per beam**

250kg

# Steora City



## PV modules

**Combined rated power**  
100 W

**MPPT tracking speed**  
<100ms

**Combined efficiency**  
50.00%

**MPPT for each beam**  
Yes

## Qi wireless charging

**Rated power**  
10 W

**Range**  
6 mm

**Qi efficiency**  
Up to 80%

**Qi activation time**  
<2s

## LED ambient light

**Rated power**  
8 W

**Color temperature**  
4500 K

**Dimmable**  
Yes

**Time controlled light**  
Yes

## Li-ion battery pack

**Total energy**  
190 Wh

**Rated voltage**  
11.1 V

**Max. voltage**  
12.6 V

**Peak power**  
400 W

**Continuous power**  
300 W

**Over current protection**  
40 A

**Over discharge protection**  
<3 V per cell

**Short circuit protection**  
<100μs

**Cell balancing**  
Yes

**State of charge indicator**  
Yes

## Sensors

**Pressure sensor**  
700 – 1100 hPa

**Humidity sensor**  
0 – 99 %RH ±2.0 %RH (20–80%RH)

**Temperature sensor**  
-40°C to 85°C ±2 °C

**Occupancy sensor trigger**  
20 kg

## Seating surface cooling system

**Rated power**  
10 W

**Air flow**  
52 CFM

**Temperature trigger**  
20°C to 45°C

**Noise level**  
30 dBA

## Internal server communication system

**GSM band**  
850/900/1800/1900 MHz

**Transmitting power**  
Class 4 (2W) at 850/900MHz, Class 1 (1W) at 1800/1900MHz

**GPS type**  
22 tracking (66 acquisition), GPS L1 C/A code

**Accuracy**  
GPS L1 C/A code

# Steora Classic





# Steora Classic



Steora Classic is developed as a replacement for all regular street benches around the world.

Core features are PV modules, fast wireless charging, ambient light and environmental sensors. The design is fully modular, with possibilities to change armrests, legs and other parts of the bench, making it adaptable for any location in the world.

Armrests hide two Qi charging spots, with room for additional USB fast chargers compliant with Apple, Huawei and Samsung standards.

Bottom of the seat houses LED strips controlled by an ambient light sensor that tracks natural lighting conditions and turns on automatically.

With a set of extraordinary additional options, the Classic model can become e.g. Mini weather station or even outdoor heating spot during the cold winter days.

## Dimensions

1800 x 505 x 635 mm

## Weight

55 kg

## IK rating

IK08

## Materials

alu-zinc, aluminium, hot-dip zinc coated steel [EN10346], galvanized low carbon steel [ISO 2081]

## Operating temperature

-20°C to 50°C

## Operating Humidity

[RH] 0-100%

## Environment

C4/C5\* [\*on request]

## IP rating

IP54/IP2X

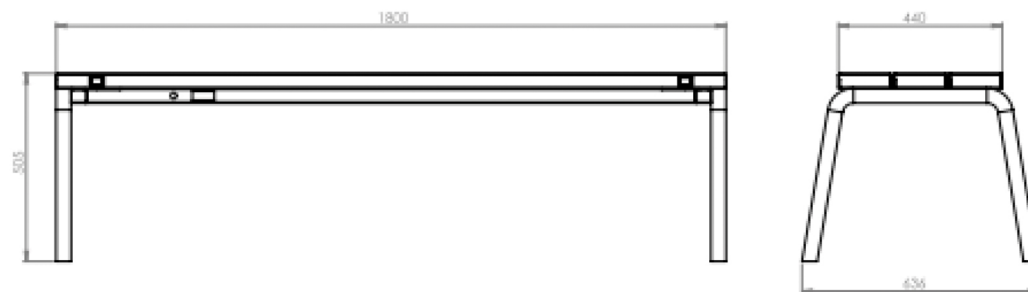
## Noise level

30 dBA

## Maximum load per beam

250kg

# Steora Classic



## PV modules

**Combined rated power**  
100 W

**MPPT tracking speed**  
<100ms

**Combined efficiency**  
50.00%

**MPPT for each beam**  
Yes

## Qi wireless charging

**Rated power**  
10 W

**Range**  
6 mm

**Qi efficiency**  
Up to 80%

**Qi activation time**  
<2s

## LED ambient light

**Rated power**  
8 W

**Color temperature**  
4500 K

**Dimmable**  
Yes

**Time controlled light**  
Yes

## Li-ion battery pack

**Total energy**  
190 Wh

**Rated voltage**  
11.1 V

**Max. voltage**  
12.6 V

**Peak power**  
400 W

**Continuous power**  
300 W

**Over current protection**  
40 A

**Over discharge protection**  
<3 V per cell

**Short circuit protection**  
<100µs

**Cell balancing**  
Yes

**State of charge indicator**  
Yes

## Sensors

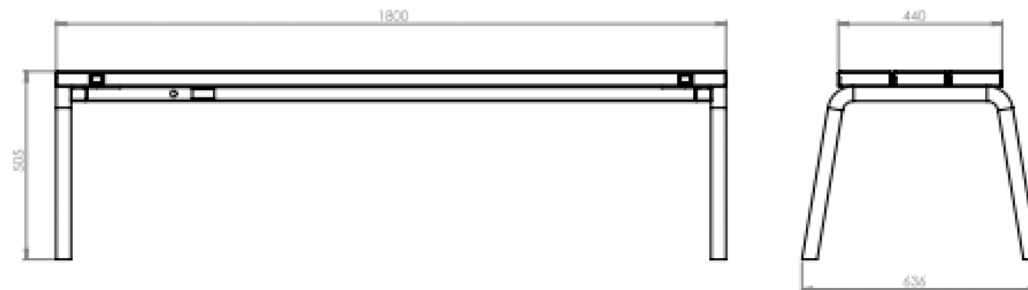
**Pressure sensor**  
700 – 1100 hPa

**Humidity sensor**  
0 – 99 %RH ±2.0 %RH (20–80%RH)

**Temperature sensor**  
-40°C to 85°C ±2 °C

**Occupancy sensor trigger**  
20 kg

# Steora Classic



## Seating surface cooling system

**Rated power**  
10 W

**Air flow**  
52 CFM

**Temperature trigger**  
20°C to 45°C

**Noise level**  
30 dBA

## Internal server communication system

**GSM band**  
850/900/1800/1900 MHz

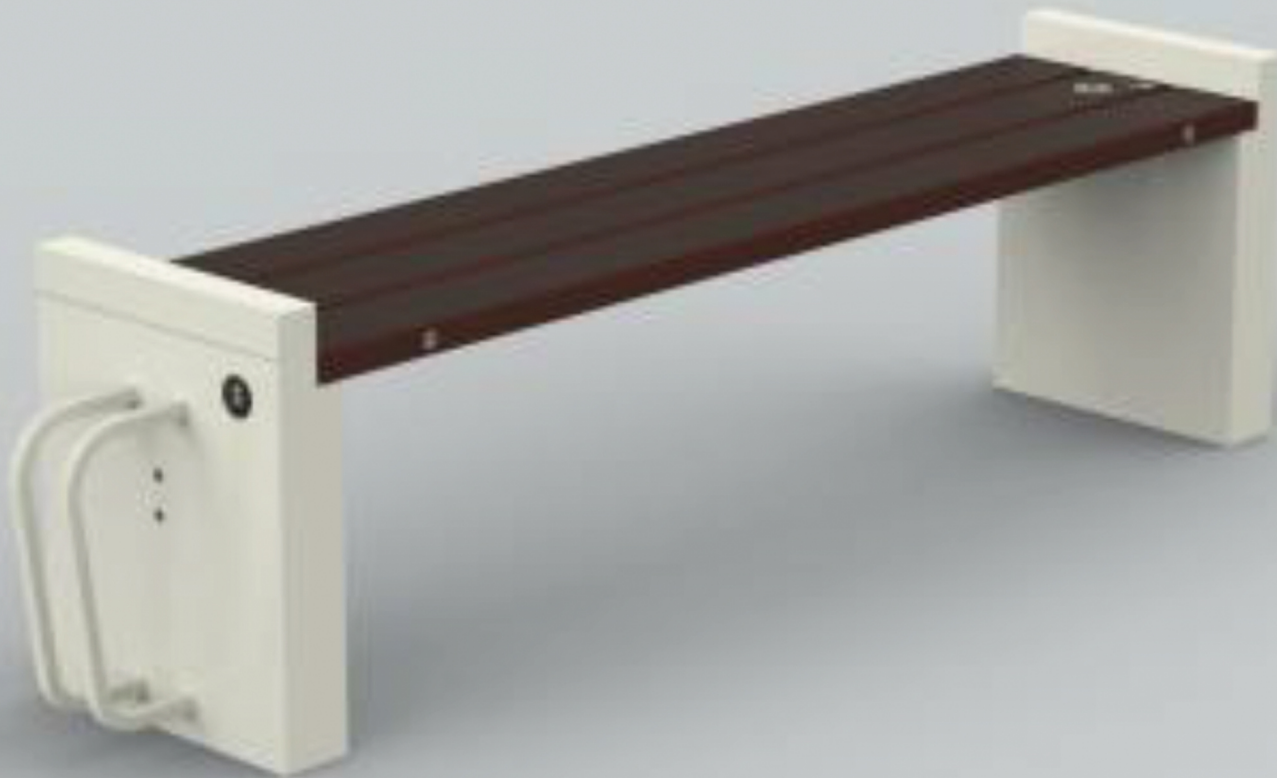
**Transmitting power**  
Class 4 [2W] at 850/900MHz, Class 1 [1W] at 1800/1900MHz

**GPS type**  
22 tracking [66 acquisition], GPS L1 C/A code

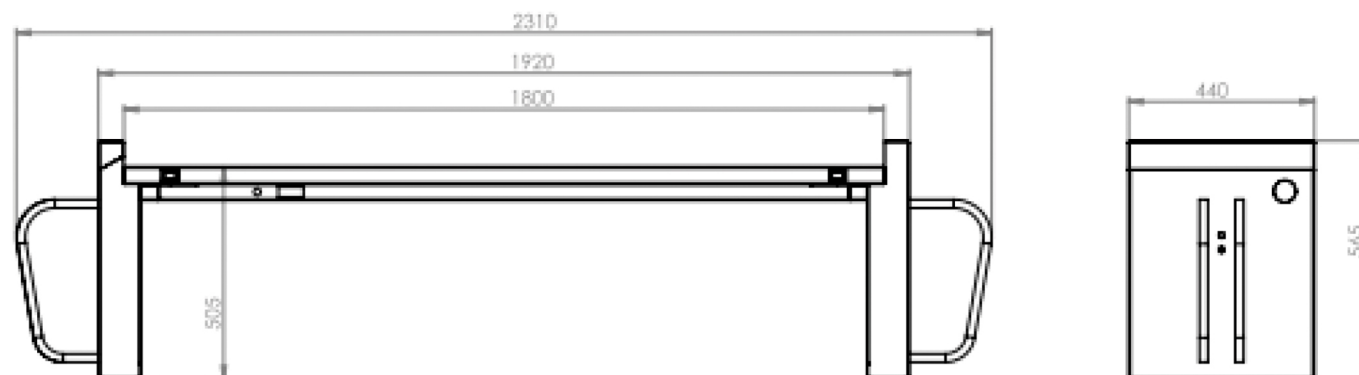
**Accuracy**  
GPS L1 C/A code



# Steora Cyclo



# Steora Cyclo



## PV modules

**Combined rated power**  
100 W

**MPPT tracking speed**  
<100ms

**Combined efficiency**  
50.00%

**MPPT for each beam**  
Yes

## Qi wireless charging

**Rated power**  
10 W

**Range**  
6 mm

**Qi efficiency**  
Up to 80%

**Qi activation time**  
<2s

## Li-ion battery pack

**Total energy**  
320 Wh

**Rated voltage**  
11.1 V

**Max. voltage**  
12.6 V

**Peak power**  
400 W

**Continuous power**  
300 W

**Over current protection**  
40 A

**Over discharge protection**  
<3 V per cell

**Short circuit protection**  
<100μs

**Cell balancing**  
Yes

**State of charge indicator**  
Yes

# Steora Cyclo

Developed for cycling off the beaten path, Steora Cyclo brings everything an urbanite or outdoorsy person might need on their bike or scooter commute - two bike racks, smart chargers for e-bikes and e-scooters, together with an air compressor and highquality tools kit, responding to all possible needs of bike and other lightweight vehicle users.

Cyclo model also comes with fast wireless charging, environmental sensors and is fully modular with add-ons such as lowerpot.

Bike repair station holds Phillips and flathead screwdrivers, hexagons size 4, 5 and 6 and wrenches from size 7 to 16. Built in air compressor unit allows riders to check the tire pressure and top up their tires using a schrader or presta valve.

## Dimensions

2310 x 565 x 440 mm

## Weight

105 kg

## IK rating

IK08

## Materials

alu-zinc, aluminium, hot-dip zinc coated steel [EN10346], galvanized low carbon steel [ISO 2081]

## Operating temperature

-20°C to 50°C

## Operating Humidity

(RH) 0-100%

## Environment

C4/C5\* (\*on request)

## IP rating

IP54/IP2X

## Noise level

30 dBA

## Maximum load per beam

250kg



# Steora Cyclo



## LED ambient light

**Rated power**  
8 W

**Color temperature**  
4500 K

**Dimmable**  
Yes

**Time controlled light**  
Yes

## Seating surface cooling system

**Rated power**  
10 W

**Air flow**  
52 CFM

**Temperature trigger**  
20°C to 45°C

**Noise level**  
30 dBA

## Sensors

**Pressure sensor**  
700 – 1100 hPa

**Humidity sensor**  
0 – 99 %RH  $\pm 2.0$  %RH (20–80%RH)

**Temperature sensor**  
-40°C to 85°C  $\pm 2$  °C

**Occupancy sensor trigger**  
20 kg

## AC socket

**Output voltage**  
230 V

**Max. power**  
300 W

**Continuous power**  
150 W

**Operating temperature**  
-20°C to 50°C

**Thermal protection**  
Yes

## DC charging

**Output voltage**  
12V/24V/36V (automatic recognition)

**Continuous power**  
63 W

**Charging amperage**  
1.5 A

## Air compressor

**Compressor pressure**  
8 bar

**Pressure sensor resolution**  
 $\pm 0.1$  bar

**Supported valves**  
Dunlop, Presta & Schrader

## Hand tools

**NFC trigger**  
2 cm

**Spanner sizes (mm)**  
7, 8, 9, 10, 13, 14, 15, 16

**Allen key sizes**  
4, 5, 6

**Flat screwdriver size**  
4 mm

**Tool lines length**  
1,2 m

## Internal server communication system

**GSM band**  
850/900/1800/1900 MHz

**Transmitting power**  
Class 4 (2W) at 850/900MHz, Class 1 (1W) at 1800/1900MHz

**GPS type**  
22 tracking (66 acquisition), GPS L1 C/A code

**Accuracy**  
GPS L1 C/A code